

## Be Part of the Solution!

### **Common Sense Precautions:**

- Do not burn within 50 feet of any structure.
- Do not burn near landfills.
- Do not burn near streams or sinkholes.
- Do not burn near utility lines.
- Do not burn on windy days.

### **Alternatives to Open Burning:**

#### **Reduce, Reuse, and Recycle**

- Donate old clothes, shoes, books, appliances, electronics, furniture and toys to charity.
- Carry a coffee mug with you instead of disposable cups.
- Bring your own cloth bag to the store.
- Many counties in Kentucky have a community recycling center that accepts some or all of these:

|                  |          |
|------------------|----------|
| Newspaper        | Aluminum |
| Plastics #1 - #7 | Steel    |
| Cardboard        | Glass    |

#### **Compost**

- Leaves and grass clippings can be turned into food for your garden or houseplants.
- Tie four wood pallets together to make a simple compost bin.

#### **Landfill**

- Items that cannot be reused or recycled should be taken to a landfill or solid waste transfer station. Many counties have one day a month FREE of charge.

Contact your local solid waste coordinator for more information or visit [waste.ky.gov](http://waste.ky.gov) for a county-by-county listing of recycling centers.

## **Report Illegal Burning: 502-782-6592**

*Or contact one of these regional offices:*

### **Air Quality REGIONAL OFFICES**

|               |                |
|---------------|----------------|
| Ashland       | (606) 929-5285 |
| Bowling Green | (270) 746-7475 |
| Florence      | (859) 525-4923 |
| Frankfort     | (502) 564-3358 |
| Hazard        | (606) 435-6022 |
| London        | (606) 330-2080 |
| Owensboro     | (270) 687-7304 |
| Paducah       | (270) 898-8468 |

### **OTHER CONTACTS**

#### **24-hour Environmental Emergency: (800) 928-2380**

|                          |                |
|--------------------------|----------------|
| Louisville Metro APCD    | (502) 574-6000 |
| Division of Forestry     | (502) 564-4496 |
| Fire Marshal's Office    | (502) 573-0382 |
| Kentucky Fire Commission | (800) 782-6823 |
| Division of Waste Mgmt.  | (502) 564-6716 |
| Dept. of Fish & Wildlife | (800) 858-1549 |



Division for Air Quality  
300 Sower Blvd., 2nd Floor  
Frankfort, KY 40601

Phone: (502) 564-3999  
Fax: (844) 213-0333  
E-mail: [burnlaw@ky.gov](mailto:burnlaw@ky.gov)

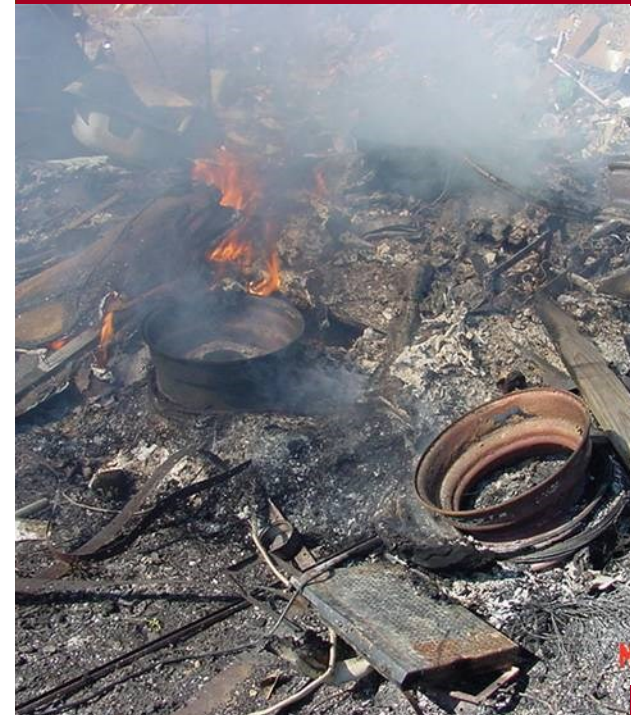
The Kentucky Energy and Environment Cabinet does not discriminate on the basis of race, color, national origin, sex, age, religion or disability, sexual orientation, gender identity, ancestry or veteran status, and provides, on request reasonable accommodations including auxiliary aids and services necessary to afford an individual with a disability an equal opportunity to participate in all services, programs and activities. To request materials in an alternative format, contact the Division. Hearing-and speech-impaired persons can contact the agency by using the Kentucky Relay Service, a toll-free telecommunication device for the deaf (TTY). For voice to TTY, call 1-800-648-6057. For TTY to voice, call 1-800-648-6056.

Printed on recycled paper with state funds.

Revised 4/17

# Open Burning?

## Learn BEFORE You Burn!



***DO YOU KNOW WHAT YOU'RE BURNING?  
YOU COULD BE FINED UP TO \$25,000!***

*Report Illegal Burning: 502-782-6592*

**Kentucky Division for Air Quality**  
[air.ky.gov](http://air.ky.gov)



## ILLEGAL OPEN BURNING

### Home & Farm

|                         |                      |
|-------------------------|----------------------|
| Animal Bedding          | Grass Clippings      |
| Hay                     | Agricultural Plastic |
| Muck Piles (manure/hay) | Barns, trailers      |

### Construction

|                     |                   |
|---------------------|-------------------|
| Asbestos Materials  | Buildings         |
| Construction Debris | Demolition Debris |
| Renovation Debris   | Drywall           |
| Shingles            |                   |

### Household Garbage

|                            |       |
|----------------------------|-------|
| Animal or Vegetable Matter | Cans  |
| Plastic                    | Glass |
| Coated paper products      |       |

### Wood Materials

|  |               |
|--|---------------|
| Fence Posts                                | Pallets       |
| Sawdust                                    | Wood Chips    |
| Wood Mulch                                 | Wood Shavings |
| Painted, Stained, or Pressure-Treated Wood |               |
| All wood building materials                |               |

### Miscellaneous

|   |             |
|---|-------------|
| Chemical Containers   | Coated Wire |
| Insulation  | Furniture   |
| Carpeting   | Rubber      |
| Tires   | Used Oil    |
| Waste from Industries, Businesses, Schools, Churches, and Farms |             |

## Report Illegal Burning!

Illegal open burning is hazardous to human health and to the environment. Report suspected cases of illegal burning by calling the open burning complaints and information line:

**502-782-6592**

## Learn *Before* You Burn

According to KY Title 401 KAR 63:005, some open burning is legal, with restrictions. But **most materials are actually illegal to burn**. The Division for Air Quality can impose **fines of up to \$25,000** per day per violation of the law. It pays to learn before you burn!

## Serious Health Risks

Today's trash is different; plastics, chemicals, and numerous other synthetic materials are far more common in the stuff we throw away. Burning this trash releases high levels of toxic pollutants such as dioxins, sulfur dioxide, lead, and mercury. Children and the elderly are especially sensitive to the air pollution from open burning.



*An example of an illegal open burn.*

## What are dioxins?

Even the most common household trash produces **dioxins** when burned. Dioxins are dangerous at extremely low levels and have been linked to cancer and other serious health problems. The EPA has shown that open burning of household garbage is the nation's largest source of non-industrial dioxin emissions.

Dioxins from open burning end up in our water and soil. They accumulate in animal tissue and enter our food supply, especially when we consume meat and dairy products.

## LEGAL OPEN BURNING

(check local laws before you burn)

### Agriculture

Plant Beds  
Tobacco Curing

### Land Management (Onsite Only)

Storm Debris (tree limbs) \*  
Natural Growth from Land Clearing \*  
Natural Land Management \*

### Construction Site Warming Fires

Contained in 55 gallon drum (maximum)  
Clean lumber only  
Only when air temperature is below 50°

### Miscellaneous

Camp Fires (cured/seasoned wood)  
Ceremonial Bonfires  
Cooking  
Uncoated Household Paper & Cardboard Products \*

\* Except in non-attainment counties during ozone season; see below.

## RESTRICTIONS

- **Fire Emergencies:** ALL open burning is prohibited when a fire emergency is declared.
- **Fire Hazard Season:** From Oct. 1 - Dec. 15 and from Feb. 15 - Apr. 30, burning within 150 feet of any woodland area is allowed only between 6 p.m. & 6 a.m.
- **"Non-Attainment" Counties:** From May-September, open burning is further restricted in the following counties: Boone, Boyd, Bullitt, Campbell, Jefferson, Kenton, Lawrence, & Oldham. These counties were previously designated "non-attainment" for ozone and/or particulate matter because their pollution levels exceeded those permitted by the Clean Air Act.

**Protect your children's health. Be a good neighbor. Follow the law. Do not burn illegally!**